



bimproduction.eu

# BIM Production

## *What is BIM?*



...your bim ally



bimproduction.eu

# CONTENT

**3 DO YOU CARE OF YOUR  
PRODUCTS WELL ENOUGH?**

---

**4 DIGITAL TWIN**

---

**5 DIGITAL TWIN - JOURNEY**

---

**6 DIGITAL TWIN - CHALLENGES**

---

**7 DIGITAL TWIN - SOLUTIONS**

---

**8 OUR PARTNERS**

---

**9 WHAT COULD BIM LIBRARY GIVE  
YOU?**

---

**10 EXAMPLES OF OUR WORK**

---

**14 HOW REVIT AND ARCHICAD  
PLUG IN CAN ENHANCE AND  
SPEED UP THE WORK**

---

**16 MARKETING – A STEP FORWARD  
FOR BIM**

---



bimproduction.eu

# DO YOU CARE FOR YOUR PRODUCT WELL ENOUGH?



# DIGITAL TWIN

## DIGITAL REPRESENTATION OF YOUR PRODUCT



PHYSICAL  
TWIN



DIGITAL  
TWIN



bimproduction.eu

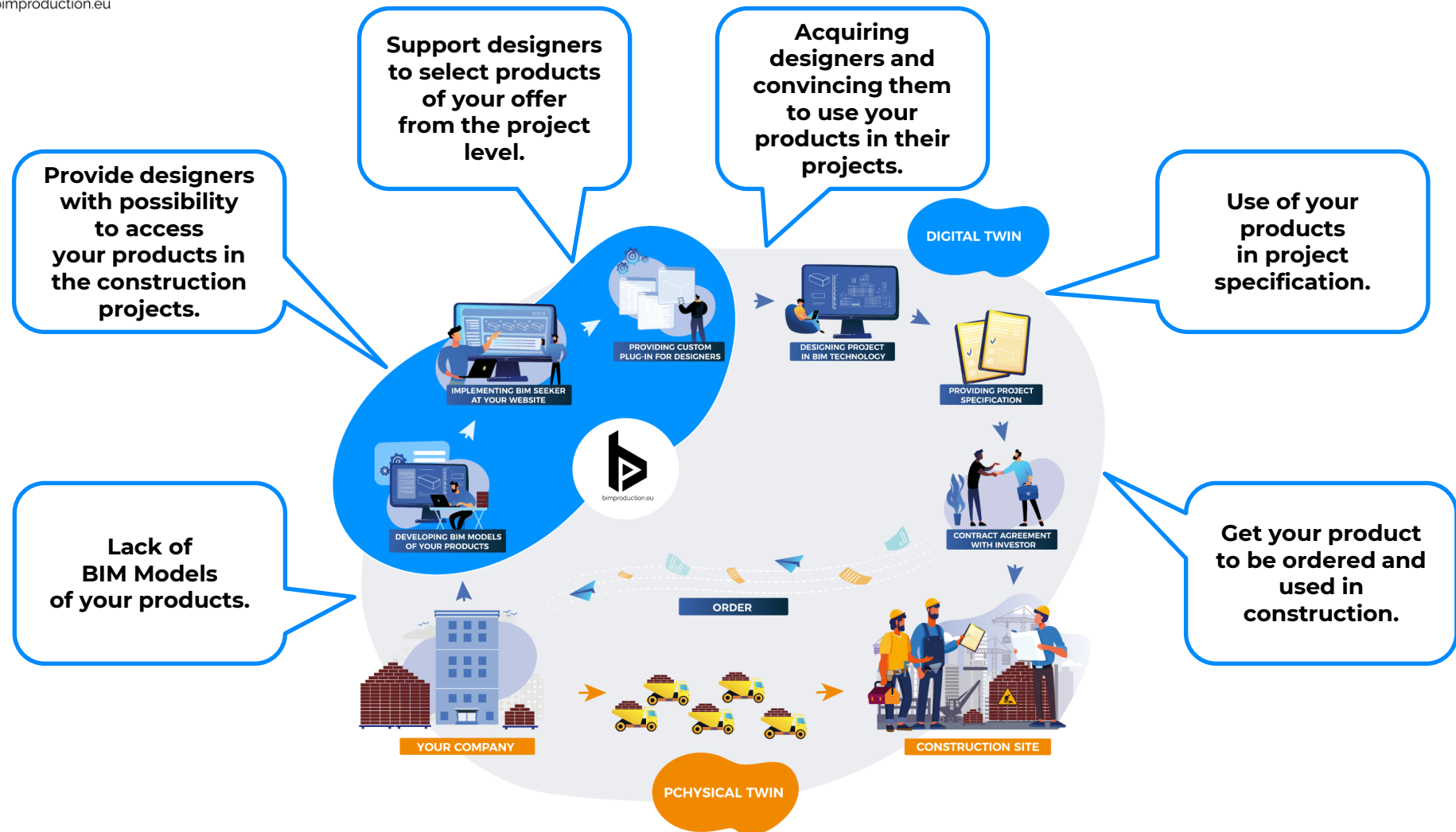
# DIGITAL TWIN - JOURNEY





# DIGITAL TWIN - CHALLENGES

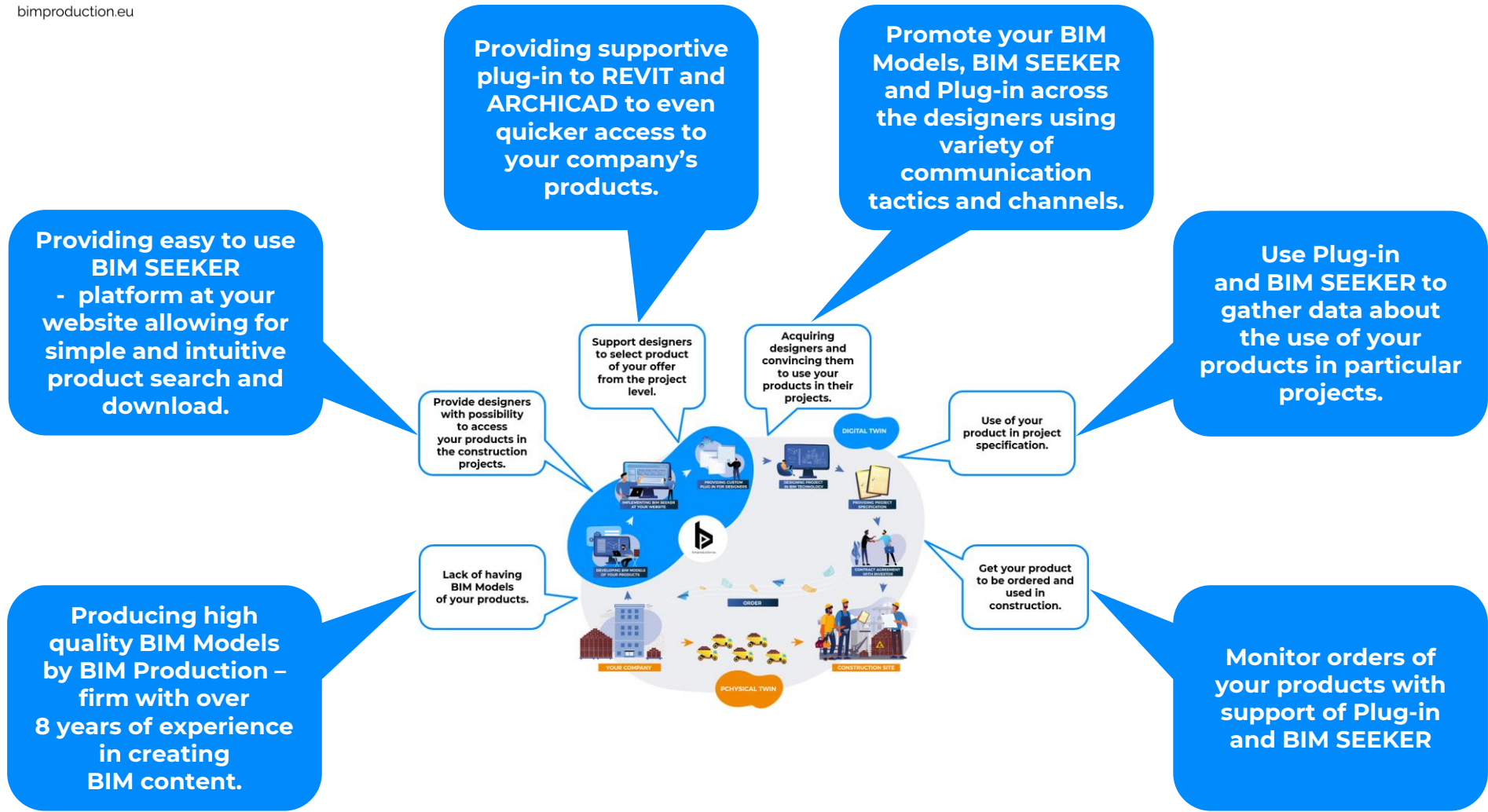
bimproduction.eu





bimproduction.eu

# DIGITAL TWIN - SOLUTIONS







bimproduction.eu

# OUR PARTNERS

**Züblin**  
Engineered Illumination

**witas**  
masters in MEP

**Victaulic**

**VERGOKAN**

**UNIHOUSE**

**telemail..**

**Techbim**

**saval**

**Stelrad**

**SODAL**

**SOPREMA**

**SOKÓŁKA**  
OKNA I DRZWI

**SKYLUX**  
Solutions

**Rf-t**

**RENSON**  
Creating healthy spaces

**RADSON**

**PRACOWNIA INŻYNIERSKA**

**ThorbiQ**

**niko**  
illuminating ideas.

**MKC ARCHITEKTURA**

**kreon**

**jaga**

**interalu**  
SMART CEILING

**VIKO**  
insulations

**HENRAD**

**GRADA**

**FOAMGLAS**



**ETAP**

**DUCO**  
Ventilation & Sun Control

**DELTA LIGHT**  
purifying pleasure

**DAIKIN**

**CLIMATECH**

**B.E.G.**

**ATAG**

**aralco**  
natural ventilation systems

**argenta**  
opening doors

**archi+**

**AR**

**Aedas**

**AEC**  
DESIGN





bimproduction.eu

# WHAT COULD BIM LIBRARY GIVE YOU

1

**Always up-to-date data**

2

**Integration with many programs:  
Autodesk Revit, IFC, ArchiCAD, CAD,  
Sketchup**

3

**Possibility to publish data in different  
languages**

4

**Full data control**

5

**Direct contact between the  
manufacturer and designer**

6

**Online BIM platform for searching for  
manufacturer's products and  
solutions**

7

**Product lists and specifications are  
available directly in the BIM software**

8

**Automation of marketing processes**

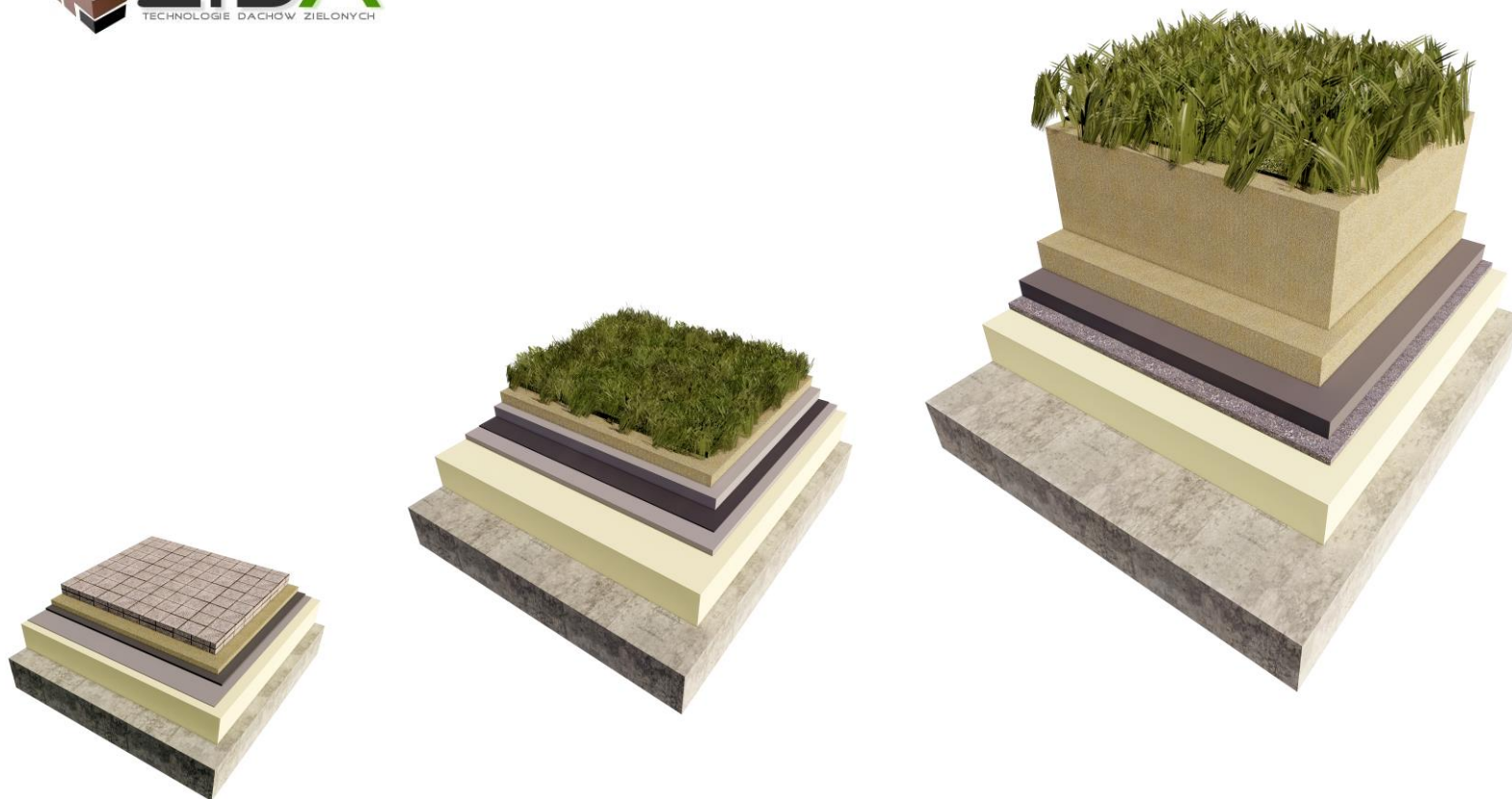


bimproduction.eu

# EXAMPLES OF OUR WORK



# EXAMPLES OF OUR WORK



# EXAMPLES OF OUR WORK

**ATAG**







bimproduction.eu

# EXAMPLES OF OUR WORK



# HOW REVIT AND ARCHICAD PLUG-IN WILL ENHANCE AND SPEED THE WORK



## MANUFACTURER

1

You will bound designers with your company not only by the quality of your goods but also with the quality of BIM models, libraries and software they will be using every day.

2

The plugin will provide you with information about who is using your product. You will also get to know about the project size and location as well as volume or quantity of your product used.

3

Backend of the plug-in will allow you to automatically send marketing messages to the designers as well as notification to your sales team so they would know who to contact and when.



## DESIGNER

1

While your end clients will experience and appreciate the high quality of your products the designer would experience high quality and clarity of your BIM models and technical documentation attached to it.

2

The plug-in helps designers in day-by-day work by adding to Revit or ArchiCad extra features to make work with your products easier compared to the competition. The plug-in can for example automatically place your products in the design based on project data, saving the designer a lot of time while ensuring that your products will get to the specification.

3

The plug-in and well organized BIM library provide huge benefit for the designer who rarely experience your physical products but very often have to deal with digital representation of it.



bimproduction.eu

# HOW REVIT AND ARCHICAD PLUG-IN WILL ENHANCE AND SPEED THE WORK

*If our products are used in  
the design, it means that we  
pretty much sold the product  
and if we send a sales  
representative, there is  
almost 100% probability  
of closing the sale.”*

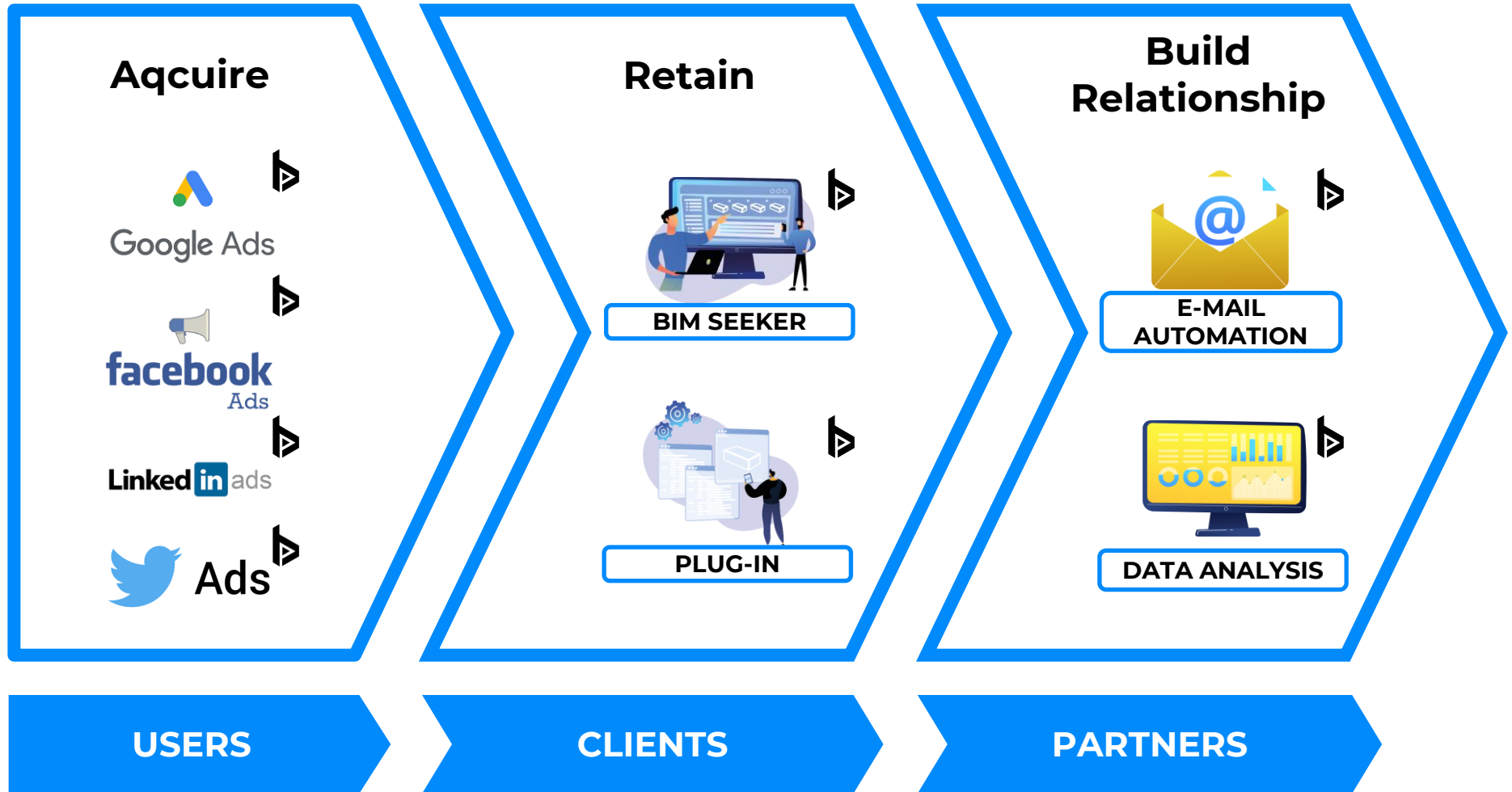
*One of our client*

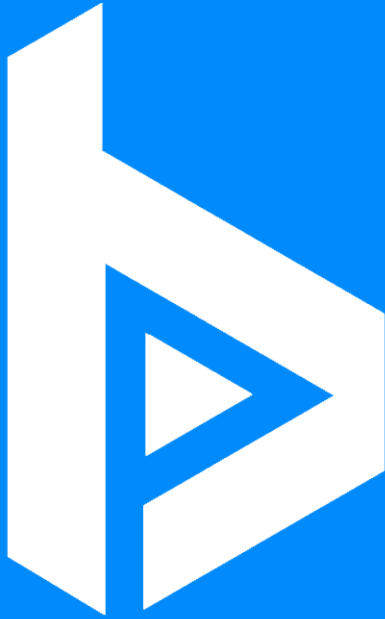




bimproduction.eu

# MARKETING – A STEP FORWARD FOR BIM





bimproduction.eu

- **e-mail:** [info@bimproduction.eu](mailto:info@bimproduction.eu)
- **Tel GB:** +44 1865 600 101
- **Tel PL:** +48 796 878 844
- **web:** [www.bimproduction.eu](http://www.bimproduction.eu)

*...your bim ally*